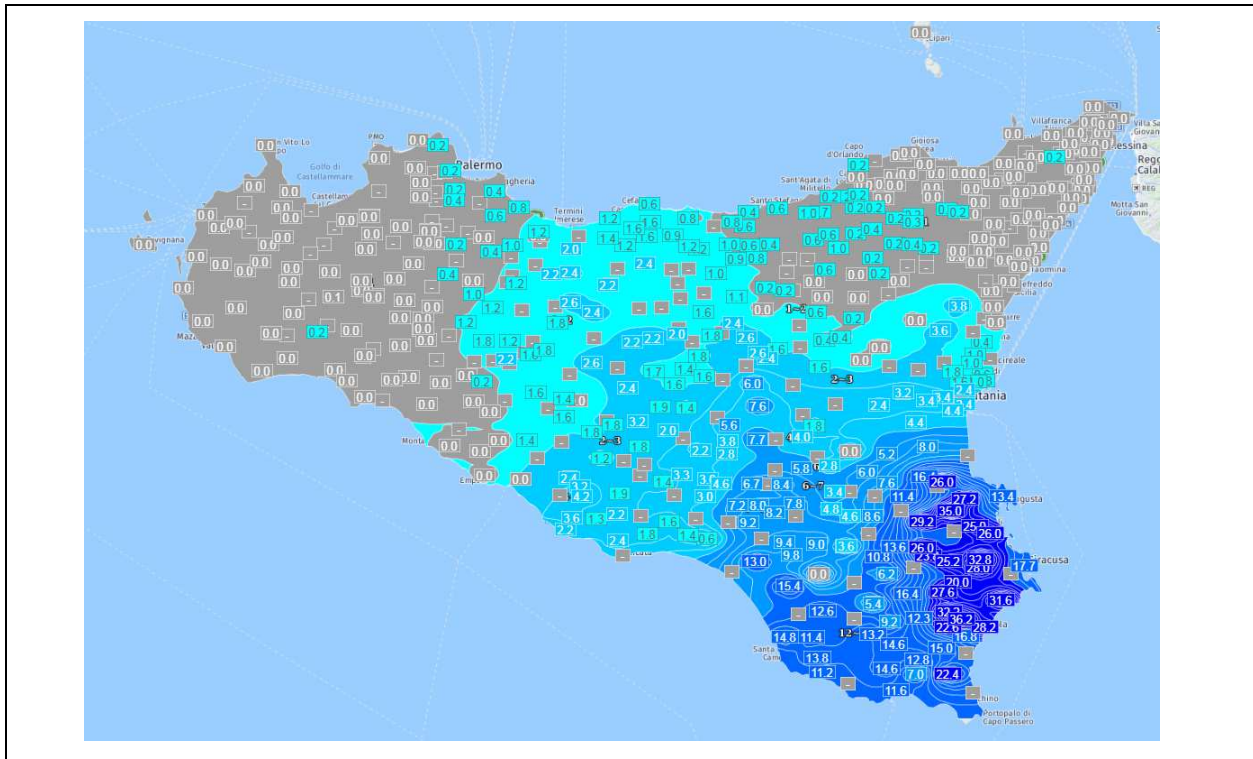
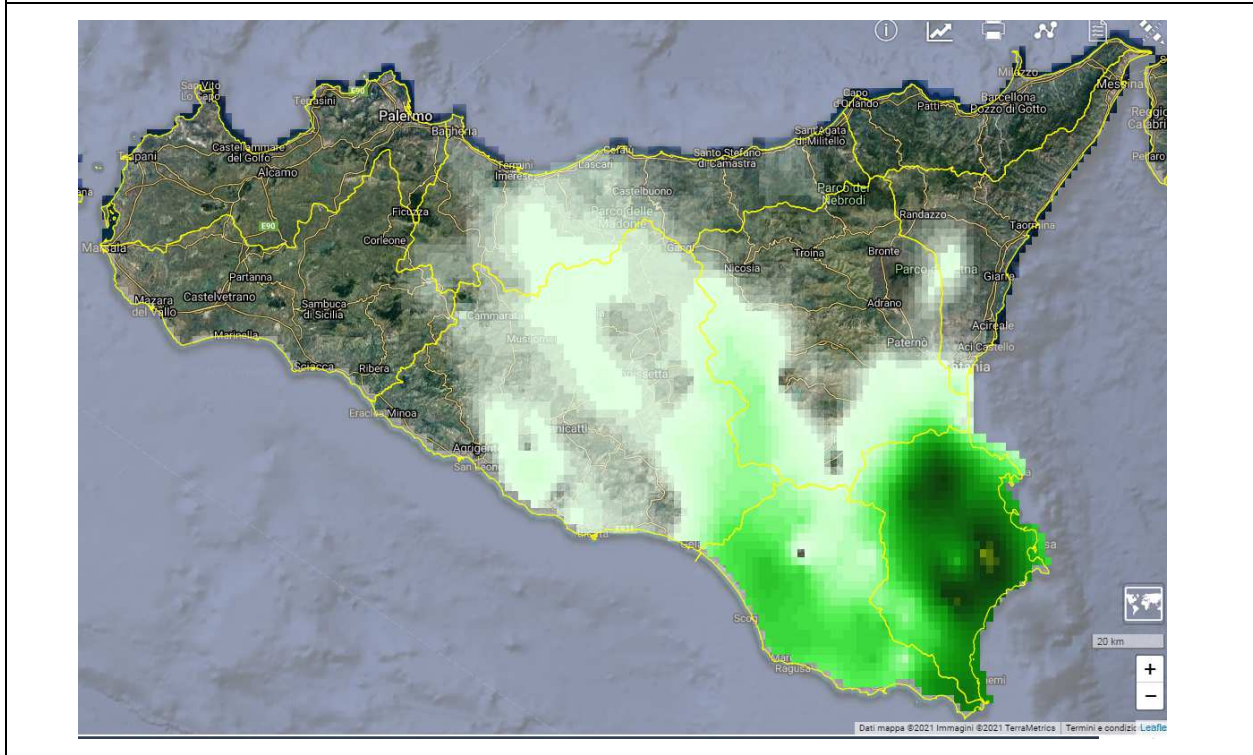




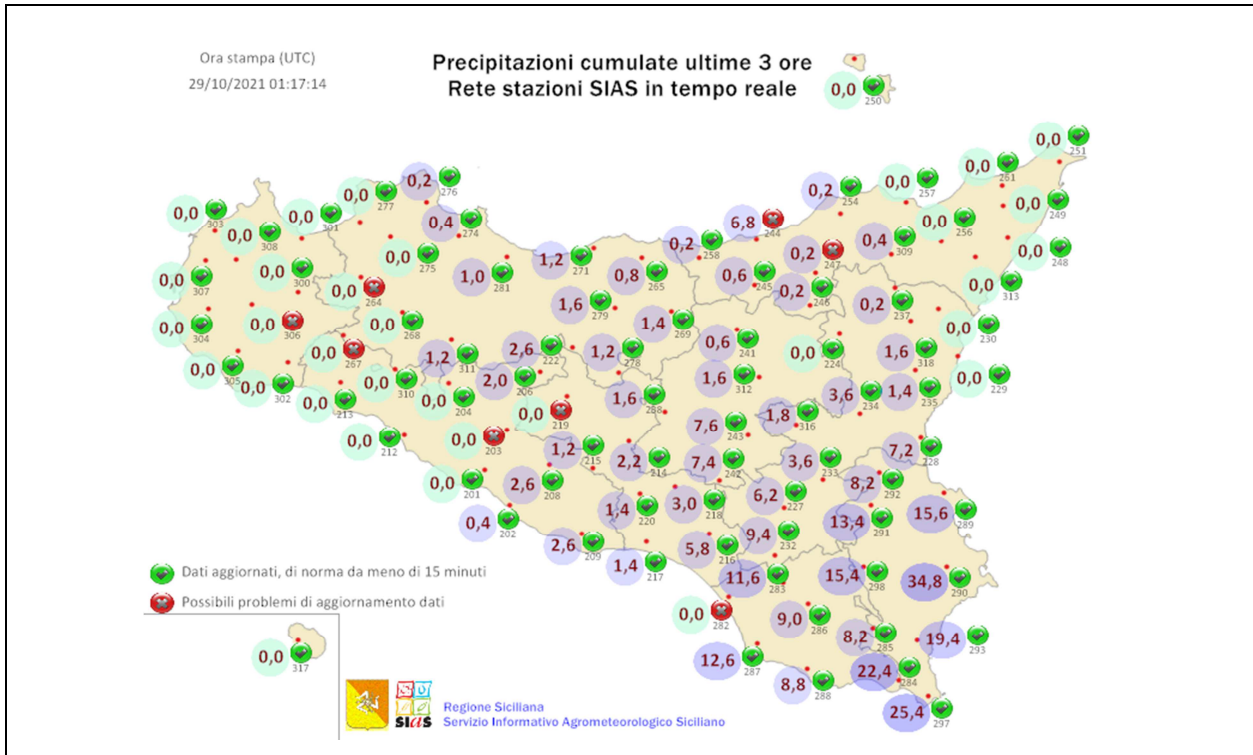
Aggiornamento monitoraggio meteo del 29/10/2021, ore 03:00



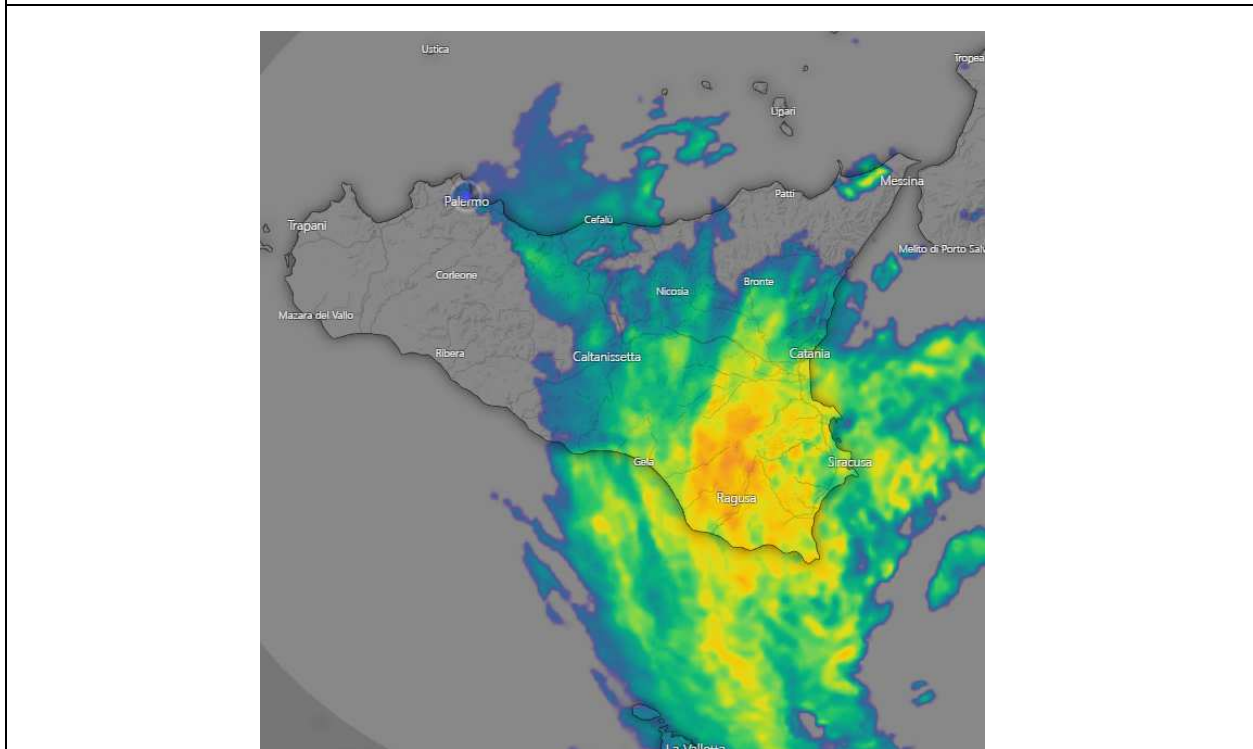
AEGIS: Mappa delle precipitazioni (ultime 3h)



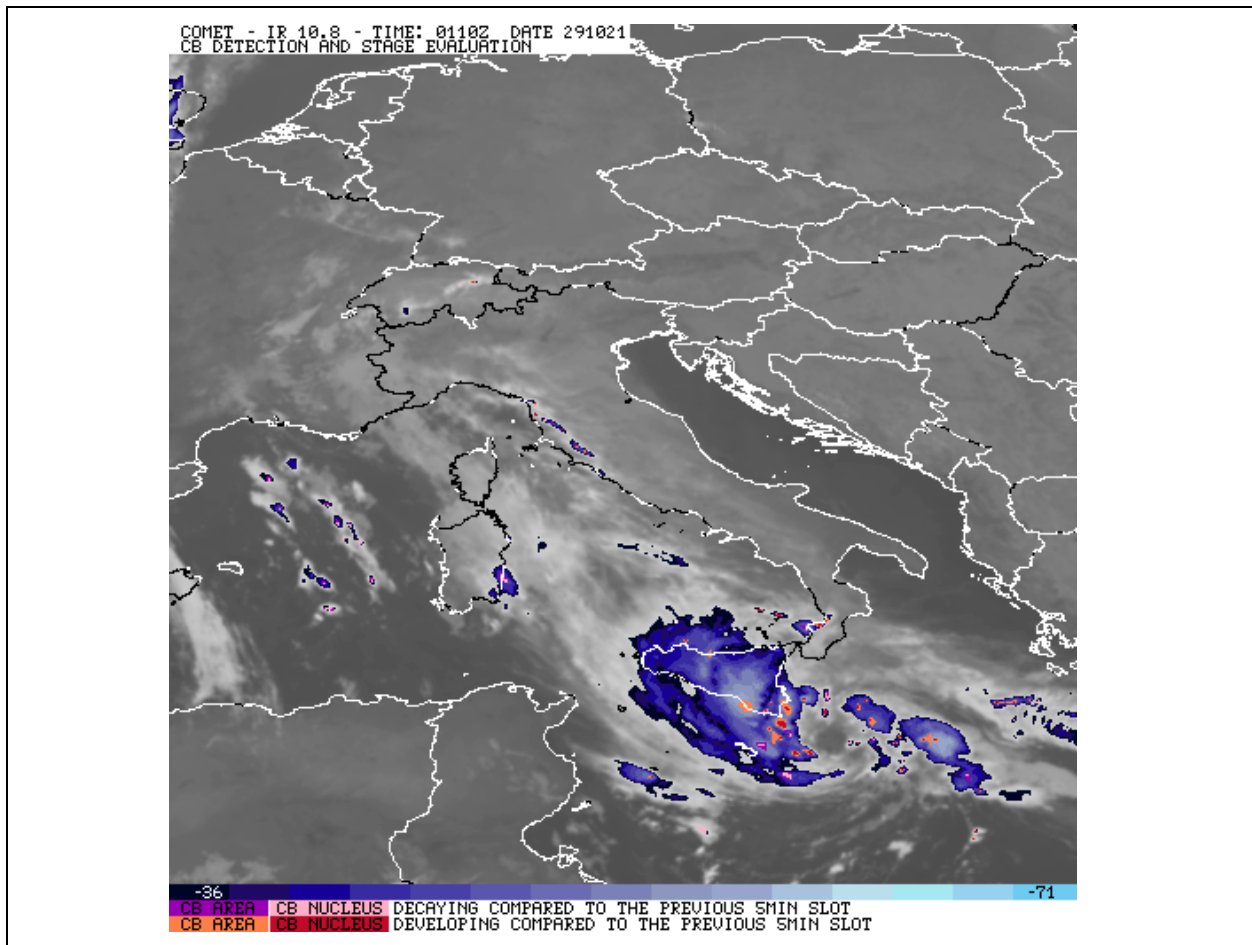
DEWETRA: Mappa delle precipitazioni (ultime 3h)



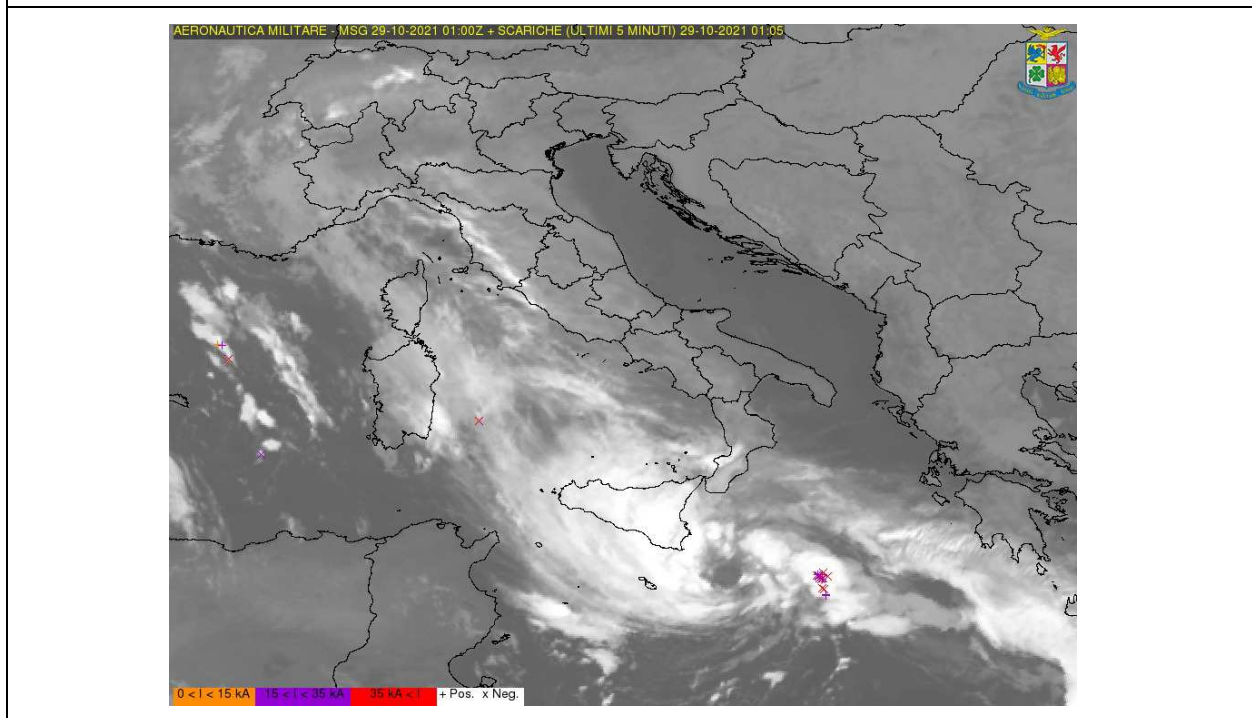
SIAS: Mappa delle precipitazioni



Windy.com: RADAR METEO



PROMETEO: Mappa delle nubi



PROMETEO: Mappa delle fulminazioni



Rilevazioni registrate dalle ore 01:30 alle ore 02:00 (ora solare) del 29/10/2021 (E)

Stazione	Umidità	Temp.	Pioggia	Zona	Ente
PACHINO_Scivolaneve	100.0	14.3	6.6 ^	F	SIAS
PALAZZOLO ACREIDE	---	10.9	6.1 ^	G	ODA
ISPICA_Cancaleo	100.0	14.6	6 ^	F	SIAS
NOTO_San Nicola	94.3	13.8	6 ^	G	SIAS
AUGUSTA_sias	96.0	14.7	5.2 ^	G	SIAS
SIRACUSA_Monasteri	100.0	15.3	5.2	G	SIAS
PALAZZOLO ACREIDE_Poi	91.3	11.7	4.8 ^	G	SIAS
BUCCHERI	---	10.5	4.1 ^	G	ODA
FRANCOFONTE_Masarischi	92.0	12.8	4 ^	G	SIAS
AUGUSTA	---	---	3.5	G	ODA
CATANIA_S. Francesco La Rena	98.7	15.5	3.2 ^	I	SIAS
LENTINI_Luppinaro	100.0	14.0	3.2 ^	H	SIAS
NISCEMI	---	13.0	3.2 ^	E	ODA
GIARRATANA	---	---	2.8 ^	F	ODA
MODICA_Cammaratini	99.1	13.3	2.8 ^	G	SIAS
RAGUSA_Cilone	97.0	9.8	2.8 ^	F	SIAS
PIAZZA ARMERINA	---	10.0	2.7 ^	E	ODA
OLIVO DIGA	---	10.8	2.5 ^	E	ODA
SAN CONO	---	---	2.5 ^	E	ODA
CATANIA OSSERVATORIO METEO	---	16.3	2.2 ^	I	ODA
NOTO	---	---	2.2 ^	G	ODA
PIAZZA ARMERINA_Elsa	100.0	11.1	2.2 ^	E	SIAS
PONTE BARCA TRAVERSA	---	---	2.2 ^	H	ODA
SIMETO A Ponte GIARRETTA	---	---	2.2 ^	H	ODA
COMISO_Monacazza	100.0	13.3	2	F	SIAS
CASTELLUCCIO	---	---	1.9	G	ODA

	MEDIE DELLE PIOGGE CALCOLATE NEI GIORNI PRECEDENTI								
	A	B	C	D	E	F	G	H	I
5 Giorni	58	23	40	48	21	38	128	56	196
1 Giorno	0	1	0	2	4	16	30	3	1
Adesso	0	1	0	0	2	9	14	2	1

data e ora
29/10/2021 03:27

Server CFD-Idro: sintesi dati meteo